

East Goscote

LONG FURROW

EAST GOSCOTE COMMUNITY MAGAZINE



AUGUST 2022

Sponsored by Josiah Hincks and East Goscote Parish Council



THE REAL HISTORY OF EAST GOSCOTE

What is under the Mound?

See pages 7-10

IMPORTANT NEWS!

Boyer Planning would like to invite you to an exhibition which will provide the opportunity to view and comment on detailed development proposals for a new residential development at Land off Melton Road, East Goscote.

The proposals for approximately 256 new homes with open space, landscaping and sustainable urban drainage are being brought forward by Redrow Homes (East Midlands) Ltd.

Members of the team from Boyer Planning and representatives from Redrow Homes (East Midlands) Limited will be available to discuss the proposals and the background to them on:

Wednesday 24th August 2022, from 2.00pm – 7.00pm at the Village Hall, Long Furrow, East Goscote, LE7 3ZL.

We look forward to speaking with you.

Boyer  **REDROW**



The circus come to town!



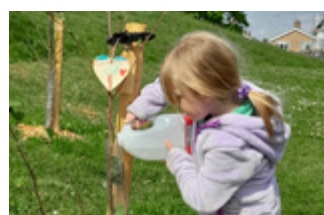
**BOROUGH
COUNCILLOR COLUMN**

Page 4



**BROOMFIELD
PRIMARY SCHOOL**

Page 5



**THE GREENER
GOSCOTE PAGE**

Page 13



**EAST GOSCOTE
SCOUT GROUP**

Page 14



JOSIAH HINCKS

SOLICITORS

Law in your Language

- AGRICULTURAL
- COMPANY & PARTNERSHIP
- EMPLOYMENT
- FAMILY & DIVORCE
- FINANCIAL SERVICES CLAIMS
- INTELLECTUAL PROPERTY
- LANDLORD & TENANT
- LITIGATION & DISPUTES
- PROPERTY CONVEYANCING
- TRUST & TAX PLANNING
- WILLS & PROBATE

Our offices are open.

Free initial telephone consultations are available please contact us on the telephone numbers below or visit our website.

0116 344 0210

Fax: 0116 290 1994

1255 Melton Road, Syston, Leicester LE7 2JT

Email: info@josiahhincks.co.uk

0116 255 1811

Fax: 0116 290 1994

22 De Montfort Street

Leicester

LE1 7GB

0116 264 3430

Fax: 0116 290 1994

33 Leicester Road

Blaby, Leicester

LE8 4GR

01530 835041

Fax: 0116 290 1994

39-41 Belvoir Road

Coalville

LE67 3PD

01858 462462

Fax: 0116 290 1994

41 High Street

Market Harborough

LE16 7NL



www.josiahhincks.co.uk

DOWNLOAD THIS EDITION AT

<https://eastgoscote.pc.org.uk/long-furrow/>

Hello...

EDITORIAL

What a wonderful day we had on Jubilee Day. The organising committee should be thanked for the effort that they put in to make it an enjoyable event. The Circus was also well attended.

With all the troubles of the last two years this was what we all needed. If you attended or had your own event, please send us your photos to Long_furrow@yahoo.co.uk

EDITORIAL PANEL

John Malpus

6, Wayfarer Drive
0116 2609789

Ian Clarke (Treasurer)

205 Long Furrow
0116 2604426

David Cannon

COPY DEADLINES

October 1st 2022

January 1st 2023

April 1st 2023

July 1st 2023

PUBLICATION DATES

November 1st 2022

February 1st 2023

May 1st 2023

August 1st 2023

IN THIS EDITION

As always we hope you find something to interest you and maybe prove useful. Here we go:

- Plant Exchange
- Circus & Jubilee photos.
- Borough Councillors Report
- Broomfield School
- History of the village
- Parish Council News
- Greener Goscote
- Scout News
- Brownie News
- Friendship Group & Library update

Hope you like it, Please let us know.

LONG FURROW NEEDS YOU

We like to think Long Furrow is part of the glue that holds our community together. We have an on-going need for help with distribution, articles and advertisements.

Just get in touch with the editorial team or email long_furrow@yahoo.co.uk if you think you can help.



ABOUT LONG FURROW

Long Furrow is published by the Editorial Committee made up of residents of East Goscote.

Please note that all photographs that appear in Long Furrow are copyright and cannot be used without the owner's permission.

Long Furrow retains the right to edit or refuse articles if it is deemed necessary. Anonymous items will not be published unless details of the writer are made known confidentially to the editor of Long Furrow.

The views expressed in Long Furrow are those of the contributors and do not necessarily represent those of the editorial panel.

The Long Furrow Committee would like to thank East Goscote Parish Council for their support in producing LONG FURROW.

AND THANK YOU

To our sponsors, our contributors, our helpers and our advertisers. Without you, Long Furrow simply would not happen.



SMART HOME CARE

BY SUE SMART

Mobile: 07843804164

Landline: 01664 563270

Email: sueclarke2009@gmail.com

What I Offer:

Personal Care, Home Cooking & Shopping,
Cleaning, Driven to Appointments,
Companionship.

CREATED BY MOLLY JACKSON




PLANT EXCHANGE

Your library in conjunction with Greener Goscote, are running a Plant Exchange Scheme during Library opening hours.

You can help yourselves to plants seen on the stand, or donate others. You can also swap plants. Periodically, the stand will be refreshed.

We would like to thank David Cannon for setting this project up.




How to raise FREE donations for


Use easyfundraising to shop
It won't cost you anything extra.



1. Get started
Join easyfundraising for free and support us





2. Start shopping
Visit retailers then shop online as normal



3. Raise donations
Your cause receives Free donation

Find us at:

Shop on mobile? Get our app

Over £50 million raised

1.5 million users

140,000 causes



Borough Councillor, East Goscote
Laurie Needham
07807399879
cllr.laurie.needham@charnwood.gov.uk

Our Village Having Fun

Platinum Jubilee Celebration's on the Village Green



The Circus Comes to Town



A **HUGE** Thank You to the volunteers of the Jubilee Committee, The Plough, Greener Goscote and the Parish Council for their time and hard work in putting on these events for the village – they would not have been possible without your support!



BOROUGH COUNCILLOR COLUMN

Jubilee

The Jubilee events in the village were a great success. Many of you held street parties which were fantastic to see.

The Jubilee Committee, in partnership with the Parish Council, organised a free event where residents were invited to bring picnics, drinks and enjoy some live music. There was a bouncy castle, stalls, ice cream van and face painting, with bunting, flags and hats! This fun, family friendly event was possible through the hard work of volunteers and funding from the Parish and Borough Council. I'd like to thank all the people who worked hard to make this such a success.

It was a wonderful way for friends and neighbours to celebrate.

The Jubilee was also commemorated with tree planting in the pocket garden behind the old GP surgery and on the Mound. These trees will be registered as part of the Queens Green Canopy. The care of the trees on the Mound is being undertaken by 'Tree Adopters' via Greener Goscote, who have chosen a tree, labelled them with wooden hearts and will water and care for them until they are established. Many have been adopted by children on the village and will be a lasting legacy for future generations of East Goscote.

Thank you to Greener Goscote and Leicestershire County Council for supplying and planting the trees and for organising the 'adoptions' and Green Canopy status.

Traffic

Many residents are concerned with the ever-present issues of parking around the school and playing fields and speeding hot spots around East Goscote. Leicestershire County Council sent their enforcement vehicle recently to monitor the parking around Broomfield. The County Council has offered all schools in the area the chance to become involved in the 'School Streets' and hopefully, if Broomfield choose to participate, this will help to ease some of the traffic issues during school pick up and drop off times.

You may have seen the temporary Vehicle activated signs on Melton Road which the Parish Council has had loaned to them by Queniborough, in an attempt to make drivers more aware of their speeds when passing through the village.

Myself and the Parish Council, have requested that East Goscote be part of the Speedwatch scheme again this year. If our application is successful, I have volunteered to coordinate it and we have had a handful of volunteers come forward to help. The more help we have to do this, the more successful the scheme will be. If you think you might be able to spare a few hours to assist, please contact me for more information.

Planning

As I'm sure everyone is aware, Redrow homes have purchased the land off Melton Road where planning permission has been granted for up to 270 houses. The Reserved Matters consultation is expected to begin by August and as I have mentioned previously, this the final stage for residents to have their views known about the type of design, layout and housing that will make up the development.

In order to try and secure the best outcome for the village, KEGG will be having a public meeting with East Midlands Community Led Housing on July 11th to learn from this organisation about how best we can make our case during the Reserved Matters process.

Parish councillors and I will also be meeting with representatives from Redrow later in July, again, to try and make sure we do all we can to represent your views about this development. More information on this can be read in the article from East Goscote Parish Council (page X).

I will of course keep everyone up to date on the process through my regular newsletters and other means.

The Charnwood Local Plan, which decides amongst other things, the location and amount of housing that will be built in Charnwood between now and 2037, has begun its 'Examination'. This means that independent planning Inspectors from the government, will test the plan for soundness and ensure it meets all its legal obligations. I attended and spoke during the first week of the hearing as did David Cannon, on behalf of the Parish Council.

Unfortunately the second half of the hearing has been postponed, with no date to resume at the time of writing. This is because Charnwood Borough Council has agreed to take some of Leicester City's unmet housing need and the Inspectors wants more detail about how that will fit into the Local Plan.

Member's Grant

Each year Councillors are allocated £500 to grant to community groups and projects within their ward. No one has yet applied for the East Goscote area, so if you have a group which you think could benefit, please get in touch and I can tell you more.

Reverend Tim Day

I was very sad to learn that the Reverend Tim Day will be moving from St Hilda's Church this summer. Tim and his family will be relocating to the Thorpe Acre area. Tim has been an asset to the Village, providing support and guidance to all who needed it. I'd especially like to thank him for all he did during the pandemic, helping me to set up a support network in the first days of the 2020 lockdown and beyond. St Hilda's also opened its doors as a vaccination centre, becoming part of the frontline in helping us to move closer to normality during those frightening and uncertain times. I wish Tim and his family all the best for the future, he will certainly be missed.

Keeping in touch

I continue to conduct doorstep surveys, so that I can stay in touch with residents and make sure I'm prioritising the things that matter to you. These are so helpful to me in my role as your local councillor, thanks to all who take the time to fill them in.

I continue my quarterly newsletters, which I hope keep you all to date with issues affecting East Goscote and the work that I do. A big thank you to those who help me to deliver them.

I am available anytime if there's something you want to raise or need help with. The best way to contact me is by phone or text, and you can also email me. All details below.

Thank You

As ever, I'd like to thank residents, volunteers, parish employees and councillors who continue to make East Goscote such a great place to live.

Laurie Needham – Borough Councillor, East Goscote.
07807 399879 cllr.laurie.needham@charnwood.gov.uk



Broomfield Primary School



This term has been super busy as always at Broomfield. It has been fabulous getting back to normal and having trips and visits. Here are some of events this term.



Foundation stage visited White Post farm and had a mini beasts handling workshop. They met lots of different animals and the chance to feed lots too.

Our Year5/6 classes took part in a teambuilding day at Beaumanor Hall. They completed orienteering activities as well as having to build a structure to support the whole team.



We held our popular Year 6 Takeover day. All our Year 6 children had a different job to do for the day from being part of the premises and catering team to teaching and office staff.



Years 1 and 2 visited Twycross Zoo as part of their animals topics and had a habitats workshop as well as seeing some amazing animals too.



We all enjoyed celebrating the Platinum Jubilee with our history and art work and street party!



To see what else we have done this year or to find out more about us – please visit our website:

www.broomfield.bepschools.org

Properties required in Syston, Queniborough, East Goscote and surrounding areas!



HomeMove
ESTATE AGENTS

By Paul Battisson

01163 121321

www.homemoveEA.co.uk | Paul@homemoveEA.co.uk

SOLD STC

Local, independent Estate Agent based in Queniborough covering Leicestershire...

For a **free property valuation** contact
Paul Battisson at HomeMove Leicester on -
t: **01163 121321** e: **Paul@homemoveEA.co.uk**



* If you have already instructed an agent on a sole basis, please check the T&C's in order to avoid the potential of having to pay two agency fees.



THE REAL HISTORY OF EAST GOSCOTE

What is under the Mound?

Two left over buildings from the massive Ordnance Factory No10

Everyone who moves to our village is told the received 'history' of the village. A massive slice of that is about the indestructable, totally bomb proof nature of the buildings under the little hill known as 'The Mound' off Long Furrow ... It's also said that Factory 10 was a top secret establishment with a vast network of tunnels housing Lord knows what secret activities.

Trouble is, this is pure nonsense, a total urban myth.

The Background - 1940 a Desperate Year for our Nation

The Wreake Valley area south of Melton including Holwell Works Asfordby, Old Dalby down to Thurmaston plus Queniborough, Rearsby, Syston, Thurmaston and Ratcliffe on the Wreake rapidly developed as a big concentration of war time industry and war effort. Around 450 acres of land near Queniborough was requisitioned by the Ministry of War and around 180 to 200 acres were built upon. The remainder was used to quarry sand and gravel to build the factory, provide safe space and storage, build flood defences and water management schemes. Queniborough Brook was straightened and the bank raised by summer 1942.

By 1940 the government was desperate to increase the armaments production of the country. We had been defeated in France and had rescued our army from the Germans at Dunkirk. Invasion was imminent and desperate measures included mass production of chemical weapons. They were not made here in Leicestershire but ... the lanes around Queniborough, South Croxton, Beeby, Hungarton and Lowesby were used to store massive quantities of Mustard and Phosgene in various make ups including in shells. They would have been close enough to the front lines on the south coast but also safely dispersed until used against the invading Nazis. Old Dalby had a massive munitions depot built nearby in 1939/40 and Old Dalby Queensway was built as accommodation for the garrison there.

The Battle of Britain was being fought throughout the summer of 1940, Hurricane Aircraft were being rapidly repaired and put back in to the air at Taylorcraft Aircraft Factory in Rearsby. Ratcliffe Aerodrome was requisitioned by the Air Transport Auxiliary to ferry and store aircraft. Syston and Thurmaston were a centre for airframe production including for the famous Auster, made in Rearsby.

The Location and main contractor (Holloway Brothers) for the Ordnance factory were decided upon and the land requisitioned by the end of 1940, early 1941. By the time our factory, officially named Royal Ordnance Filling Factory No 10 Queniborough opened in September 1942, the workforce apparently contained some refugees from the conflict in

Europe. The workforce was mainly local labour and so the limited hostel accommodation on site was mainly for women in the uniformed services. Converted buses were used as bunk houses for some male workers. They also came from Melton and Leicester by train and used Queniborough Station which was on a loop just off the main line next to the factory, roughly where the scout hut is now.

48 Ordnance factories were planned but 44 were finally constructed. Ours was the very last one to be built in the UK. Originally planned for areas in the Northwest away from German Bomber range it was realised that more capacity was urgently needed and so were built further south. Some were purely for explosives manufacture, others like ours were designed to make the explosives in to armaments i.e. fill shells and bombs with explosives. These were the Filling Factories and ours seems to have produced a lot of 500lb bombs as an agency factory run by Lever Brothers.

10 different classes of bomb and shell manufacture were performed at such places. Our factory, with 285 permanent buildings was completed on 30th September 1942 and was a near bog standard design apart from one group of buildings for making incendiaries was not completed.

After three years of operation, war in Europe ended so that production ceased around May 1945. However a triangular 7 acre section near Broome Avenue, Melton Road continued as RAF Depot no 78 until c 1959. The then derelict main production site was certified clear of explosives I believe on hand over to Jelson who bought a 142 acre plot of the three on offer.

Jelson's Vision, Leicestershire Council's Opposition - 'P--- Off'

Jelson submitted an application to develop our village on the 1st March 1962 by asking for change of use of the land. To cut a very long story short, after tens of letters, rejection, appeals, a public inquiry and a decision by the housing minister Sir Keith Joseph, permission was granted. **There was no building on site that could not be demolished.**

The first condition in the initial planning permission was that 'ALL the existing buildings and installations on the site shall be demolished and the surplus material disposed of ...' An earlier letter stressed that all rubble was to be removed off site. Demolition eventually came to be understood as 'to ground level' so there is a lot of concrete still around. This was acceptable at the time but modern decontamination standards would not allow that approach.

Slowly the planning position changed as Jelson realised that they were standing on top of at least 15 acres of good quality sand and gravel. They asked to extract this from the area next to the railway. The resulting hole was filled with demolition rubble and covered to create the Jubilee Playing field.

They also asked for a variation to allow for two buildings to be retained. At a meeting on the 17th July 1963 Mr Nixon of Jelson '...raised the question of gravel working in advance of complete demolition of existing buildings and the Company's desire to retain one or two of the existing buildings temporarily as workshops and canteen during the period of construction.'

However it was always anticipated that all buildings be demolished to at least ground level, so why were these retained? Physically they could have been demolished. I believe that the problem may have been that new houses had been built in such close proximity and that the disruption may have been considered unacceptable. The second more cynical view relates to the need to complete the village at reasonable cost during a time of shortage of labour and materials and it was toward the end of the construction phase. A 1964 architect's drawing showed the retained buildings as landscape features.

Pictured below are the two buildings left on site- (from a 1944 aerial photo). Broome Lane is to the top of the picture and the now demolished Broome Lodge is visible just over the railway to the west.

Of the two largest buildings in the centre, the one to the left (The Chase) was an explosives magazine, it is not likely reinforced beyond having blast walls, possibly 14 inches thick with soil berms all around it and a layer of soil on the 6 inch thick concrete roof. All buildings on ordnance sites conformed to safe design practices for handling and storage of explosives and so were very standardised across sites. If hit by high explosive bombs it would explode upwards, thereby reducing collateral damage but it was enough to defend against incendiary bombs. It was never ever built to fully withstand high explosives.

Of more concern to the residents of today is the second building on the right (alongside Long Furrow now). It is likely to be a less well constructed industrial or storage block and may well have a thinner roof. A recent survey concluded that if we want to know more about it we will have to dig down to find out what is happening. Running a tractor and mowing rig over this 80 year old building, which may now be showing signs of settling, is not a good idea if we want to preserve it as open space for people to walk on. Hence the change to the maintenance regime and allowing areas to rewild, restore plant species, insects and birds.

Photos exist of the inside of similar buildings on other factory sites and would indicate that in most cases the flat roof is supported by numerous concrete pillars. Other building types were totally open voids. It is thought that the concrete roof may settle but remain intact.



Aerial photo of the buildings under the mound c 1944

'Pis Aller'

Leicestershire County Council were strongly opposed to housing development here. It had been hoped to return the land to agriculture after first extracting sand and gravel. However, the arguments are just the same as today ; it was not part of the County Development Plan; it would tend to link the villages of Queniborough and Rearsby with housing and so on. The big problem was that there was a massive derelict eyesore that needed sorting. Jelson had a vision and apparently had the resources to undertake such a massive project. After about 60 houses had been built in 1965 , in a Leics. County Council document of 12th November 1965 someone called R S Taylor said '...our offer to help with the preparation of a scheme of comprehensive redevelopment was seen by us at the time as something of a pis aller' Translated it is 'Piss off' and it is surprising that these words are actually on record. The project aroused strong emotions but Jelson's vision and dogged tenacity eventually prevailed and we now have one of the best settlements in Charnwood.

Why Weren't These Two Buildings Demolished?

The newly built houses on The Chase and the nearest houses on Countryman's way were just a few metres away. The village was nearly complete and the architect's drawing below of January 1964 seems to indicate that it was always intended to retain the area as a landscape feature? Jelson was asked recently if they had an archive of East Goscote documents, but unfortunately they don't have any at all. The one thing we can be certain of, is that the buildings could have been demolished but weren't; I think it would

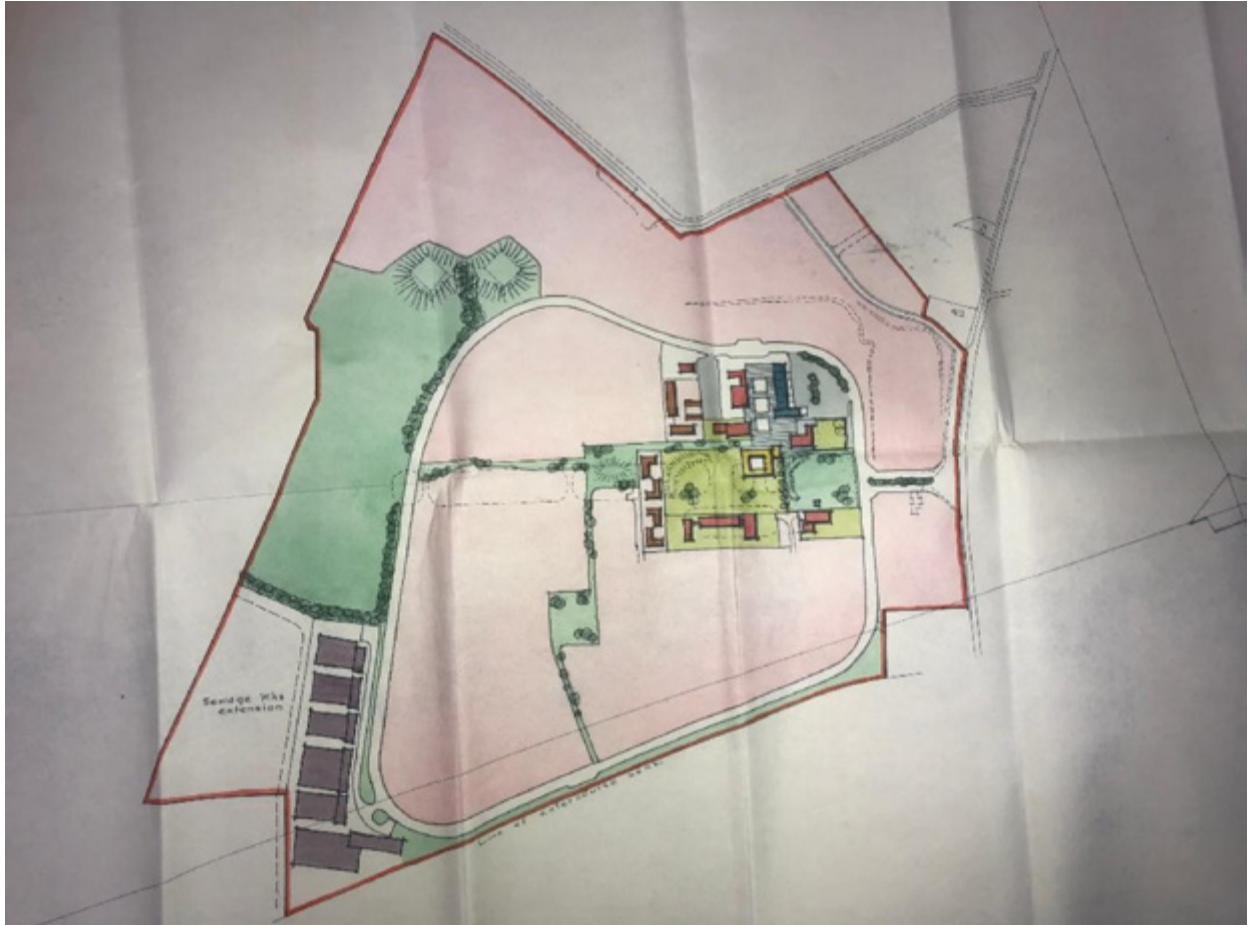
have been too disruptive to do so in what was a now lived in neighbourhood. To this day the mound area is listed as potentially contaminated Land under the Environmental Protection Act

Plan of January 1964

Whatever the reason that these two buildings were left intact, it can be seen from this drawing of January 1964 that the landscape feature on the green space contains two square features. Could it be that Jelson had decided this was what they were going to do despite all of the conditions imposed requiring demolition? Another document mentions 'difficulties' but does not say what they were. Once the canteen and workshops were no longer needed, the village largely complete, they seem to have already planned to cover the buildings with soil and plant trees between them. Note the triangular plot to the north east and a small square plot, now Watgate to the south were not owned by Jelson at the time. The planned layout is not how East Goscote ended up either.

What Else is Left of the Factory?

In addition to the structures under the mound it is possible to see other remnants of the factory around the village. Alongside the railway you will see the remnants of the rail sidings and platforms. Jelson bulldozed rubble here and soil is thin there so that vegetation has taken 60 years to grow back.



Plan of January 1964



Immediately east of the bridge over the Brook on Melton Road there are old concrete platforms and pipes from what was pumping station number 1. Pumping Station number 5 is still intact on the Wreake but suffering from subsidence. This is a rumoured 'tunnel' entrance but it was essentially connected by a one yard diameter pipe to the factory complex. The 5 diesel powered pumping stations were concerned with water supply for munitions manufacture, feeding the 8 massive boilers in the two turbine houses and for pumping water from the two huge fire fighting reservoirs on site.

Queniborough Brook Straightening

The largest structure that remains is the c.1000 yard channel that was built to straighten Queniborough Brook and provide water infrastructure and flood defence for the factory. Before this, the brook meandered and flooded the surrounding fields. Land close to the Wreake on the western boundary of the requisitioned land was raised in order to minimise flooding of the factory. These remain the primary flood defences of the village to this day.

Fed up Farmers

The requisitioning of land in 1940 and the enforced flood works caused a lot of inconvenience to local farmers who were under great pressure to produce food efficiently. They also lost large numbers of farm labourers to the forces. The National Farm Survey from 1941-43 classified farmers according to their efficiency on a scale of A, B or C. Grade C

could mean that your farm was taken over. Most in this area were graded B and the only farmer graded as A, the Van den Willick brothers, did not grow food, but grew roses. The reasons for a B or C grade were further categorised as Old age, Lack of Capital or Personal Failings. It was like an OFSTED for farmers and could lead to loss of your livelihood!

Requisitioned Land, a Rose Grower's House and Mr D Beedle the Quarryman

The reasons for the location of Factory 10 were - it was reasonably flat, had plenty of water from the River Wreake and Queniborough Brook, sand and gravel from a new quarry immediately to the east of Melton Road (likely operated by quarryman Mr Beedle of Thurmaston), good road and rail communications, a ready supply of labour and also not too close to the local populations in the event of disaster.

The c 450 acres of land requisitioned is not fully on record due to such records relating to Leicestershire being destroyed post war. You can see war time fencing and boundary posts to the west near Beedles Lake on the Golf course and the Pumping Station no 5 remains near Rearsby Wharf on Broome Lane. In the copse near Huntsmans dale near the railway there are a number of the original fence posts. The boundary ran along Melton Road and Broome Lane. The westernmost boundary posts are alongside the roadway near Beedle's lake on the golf course.

The house called Red Roofs with the spectacular Dutch glazed red tiles on Melton Road was requisitioned in September 1942. It was owned by the Van den Willick family who grew roses in the adjacent fields. It must have been extremely difficult to give up the unique house that you had worked so hard for by building up a successful and well run business. I believe that it was occupied by a military man in charge of the factory but I need to do more research on that. I have a picture of Captain Mannering in my mind!!

Rod Axon

NB

I am hoping to write a full version of the history of East Goscote from the mass of materials I found at Wigston Record Office and The National Archive in Kew. I stumbled across much of this when researching the documents submitted for the Gladman Land Application. What I would like is some more personal stories of East Goscote, Rearsby and Queniborough families. Many refugees sought naturalisation and they must still be part of the local Queniborough and Syston scene. If anyone has any information that would make this story one about people as well as places I would be very grateful to receive it. Thank you

All copyright acknowledged with thanks

EST 1987



TLB



CONSTRUCTION SERVICES LTD

Building, Construction & Civil Engineering Contractor

New build to Extensions

Self Build Private Developments

Block paving and Tarmacing

Drainage Construction

Reinforced Concrete & Formwork

Foundations & Formation Work

Industrial Units

Highways & Road Construction

Sewer Connections

Carpark Construction

Accesses and Driveway Construction

Interceptors, Cesspits, Storage Tanks

***Local Authority Approved Contractor *NRSWA Accredited**

BIG Enough to Compete, Small Enough to Care



Tel/Fax: 0116 2606 731

Mob: 07702 546 227

Email: tim@tlbconstruction.co.uk

Website: www.tlbconstruction.co.uk



EAST GOSCOTE PARISH COUNCIL NEWS

NEW HOUSES OFF MELTON ROAD

You may have seen Redrow's advertising board at the junction of Broome Lane and Melton Road. They have bought the land with outline permission for up to 270 houses.

Their permission has only one approved item - access to the site via a new roundabout. All other items are known as reserved matters. Redrow have so far approached Charnwood Council for pre-planning advice in a confidential phase of the planning process. East Goscote Parish Council (EGPC) has submitted a considered and detailed response and hope that the outcome will be a safe and well-integrated scheme that gives affordable and varied housing opportunities for local families.

When the specific permissions are applied for, we can all then attempt to influence the outcomes and ensure the safety issues are properly addressed. No house can be built until all people and environments at risk from pollution and other hazards are protected and the contaminated land properly remediated. Strict conditions have been imposed by the Environment Agency and Environmental Health Department of Charnwood in relation to the large, currently very safe wartime quarry and landfill in the southern section. There is no doubt that this development will cause a lot of disruption to the village and some nearby residents will be directly affected for at least 7.5 years. Construction traffic will be a problem for all of us. We will need to make sure the build-out phase is done considerately.

In the meantime, Rod Axon, EGPC's researcher during the last four years of planning application, Liz Pizer the EGPC clerk and Laurie Needham our Borough Councillor are monitoring all correspondence. Rod is happy to answer any background queries via the EGPC contact email address or please write to the Parish Council, The Village Hall, Long Furrow, LE7 3ZL. As we receive more information, we will be in a better position to advise you. On a positive note, Redrow have asked to meet EGPC representatives in July. We believe that they wish to commence building in 2023.

SPEEDING

Motorists, please abide by the 20 mph Safety Zones in the village when the children are going to and from school. The Safety Zones are in areas of Ploughman's Lea, Long Furrow and Chestnut Way and lights will flash at school times. At 20 mph pedestrians will have over 90% chance of survival from a collision. This drops to about 50% at 30 mph and below 10% at 40 mph so 20 mph maximum please at school times.

CAR ENGINES LEFT RUNNING

Please switch off your car engine when dropping off and picking up children. Did you know that the worst pollution when your engine is running while stationary is inside your car as your fan, heater or air conditioning draws exhaust

fumes into the vehicle and into your lungs? Better for you and yours, your wallet and the planet to switch off.

ON THE VILLAGE ...

The Platinum Jubilee event on 4th June and the visit from James Richards Travelling Circus were very popular. A huge thank you to all who made these events possible and all who came to join in some much-needed fun. Extensive work to play areas has already been carried out and more is in progress and we are planning to run another Community Speed Watch Scheme. And finally a professional tree survey for the Parish Council owned trees has been arranged over the next few months and we have registered 35 new trees on the Mound as our village's contribution to the Queen's Green Canopy.



David Bramley Foot Health Practitioner

Home visiting foot care service.

For appointments please call
0116 2213532 or 0775 1141358

FAB Plumbing

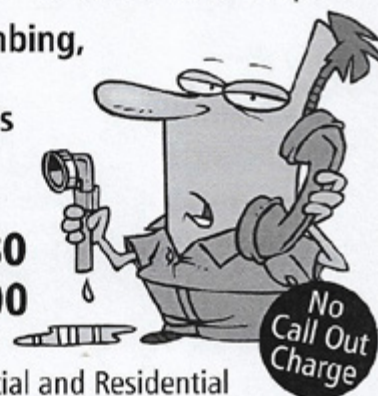
Advice - Service - Installation - Repair

For all your plumbing,
heating and
gas requirements
contact the
professionals

0333 456 7080

07708 917400

info@fabplumbing.co.uk



Commercial and Residential

Boilers, Gas fires, Cookers, Heaters

Plumbing and Heating - Leaks, Blockages

Landlords Certificates, Upgrades, Regulation Checks

Kitchens/Bathrooms, Power Flushing

No job too small! Give us a call!

24/7 EMERGENCY SERVICE

FREE QUOTATIONS

WRAS
Water Regulations Advisory Scheme



PART
Electrical Safety

City & Guilds
Qualified

Local - Professional - Competitive - Reliable

THE GREENER GOSCOTE PAGE

OUR QUEEN'S GREEN CANOPY

Girl power in action in the Nature Garden. Laurie, Janet and Caroline giving it some welly, planting one of three Leicestershire County Council Free Trees. We have registered these trees as our contribution to the Queen's Green Canopy and we're on the map (queensgreencanopy.org). Meanwhile, the Nature Garden continues to grow into a little oasis of peace and tranquillity for wildlife and people alike and on the Mound, Simona giving a vital drink to one of 35 young trees. We already have carers for 26 trees. If you would like to look after one or two, we have 9 more to choose from. See Contact Us. With yours and maybe your children's help watering through the dry spells, we can nurse these young trees to adulthood.



USEFUL CONTACTS:

Environment Action Volunteers promote home composting and sustainable household waste management on behalf of the Leicestershire Waste Partnership. For free advice on composting, recycling, biodiversity and climate change and for information on Greener Goscote contact David on 07873852372 or david.cannon9@btinternet.com

Other useful links:

www.lesswaste.org.uk www.completewasters.co.uk
www.recyclenow.com www.lovefoodhatewaste.com
www.leics.gov.uk www.charnwood.gov.uk
www.keepbritaintidy.org www.hubbub.org.uk
WasteNot Leics & Weigh Hey Charnwood on Facebook



Working
with Nature



EAST GOSCOTE SCOUT GROUP



Scouts have been busy as normal with many activities at the hut. They have also managed to already have 2 camps this year and have a week camp planned for the summer. Some of our older Scouts have planned patrol camps and expeditions as part of their Chief Scout Gold award.



Well, the Cubs have been up to lots as normal. They have managed to gain skills in air rifle shooting and archery. Back in March we have a Beetle drive and the Cubs raised £100 for Wishes for Kids. We have managed to go a hike from Hoby to Thrusington, with the highlight of rolling around in a field of dandelions. We had our own Platinum celebrations with bunting makings, sending the Queen our thank you notes and finishing off with a street party.

With summer break upon us the Cubs have been camping with the Beavers a great time was had by all. It was great to see all the happy faces even the rain didn't stop us. With summer break upon us we are pond dipping at Bradgate and finishing with a BBQ.

We also welcome Luke or as known in Cubs, Bagheera to our Pack. Luke has become a new assistant leader, which is much valued and appreciated.



The Beaver group are back to 'normal' – Yeah! And we have had a great and busy time too. This year so far, we have undertaken our My Skills Challenge badge which saw us making some Salt Dough Dragons, a Mr Motivator limbering up night, some problem solving, a Dragons Den night and a visit to the Bell Foundry in Loughborough.

Next up was our Safety Activity Badge, we learnt about the Green Cross Code, Water and Road Safety, became Emergency Superheroes and a bit of train spotting (well we went for a walk to the level crossing so we could practice our new found skills to cross these safely!)

We were back on Camp and did we have a good time, yes, we did! The Beavers and Cubs loved it and it was great to be back outdoors seeing the kids enjoying themselves, they had plenty of activities to keep them busy during the weekend, even the Leaders enjoyed themselves, one of them has already decided on a Wet n Wild themed camp for the next one!

Finishing off this term with a Teddy Bear's picnic at Bradgate Park. Off to plan for next Autumn now.....see you soon.



@EastGoscoteScoutGroup



@EGoscoteScouts



www.eastgoscotescouts.org.uk



Over the last few weeks we have celebrated the jubilee by having cake, decorating plates with pictures and writing letters to Her Majesty the Queen. We held a sports day which was a little window but didn't stop us having a fun time. For Fathers day we held a pub quiz which all the Dads and some Grandads attended. It was so lovely for the Brownies to have an evening with their Dad's and it seems the Dads felt the same.

Our last week before the summer, we all headed to Rearsby Brook for a spot of fishing. Always a favourite with the girls and a nice way to end the term.

If you are 7 to 10 years old and enjoy having fun, contact me on 07981812955.

Brown Owl

CHRIS MEYNELL & FAMILY

INDEPENDENT FUNERAL DIRECTORS

28 Wellington Street, Syston | Tel: 0116 260 7954

info@meynellfunerals.co.uk | www.meynell-funerals.co.uk

RICH & CARR SOLICITORS

The one with the right advice
.... is closer than you think
Expert knowledge and advice on a
wide range of legal matters

- Litigation/Dispute Resolution
- Family/Divorce/Children
- Personal Injury
- Criminal Law
- Property
- Wills/Probate/Trusts
- Powers of Attorney
- Employment

We're just a phone call away, so get in
touch today, on 0116 242 6036

**Pocket Rocket
Pre-school**

Join us for
**Breakfast
Club**

Only **£4**
per session

Includes a
**Continental
Breakfast**
for all children

Broomfield Primary School Children Only

East Goscote Village Hall, LE7 3ZL
Tel: 07414253969
Email: info@pocketrocketpreschool.co.uk
www.pocketrocketpreschool.co.uk

Let's make healthy tots
programs
Healthy Tots Club

FOOD HYGIENE RATED
5
Another reason
to choose us.

TUESDAYS 6.30PM
THE PLOUGH
EAST GOSCOTE

BOOKING ESSENTIAL

CONTACT LOUISE



BOXERCISE **MANGER FITNESS**
 07849 512870




EAST GOSCOTE
COMMUNITY LIBRARY

Our regular opening times are now:-

- Monday: 9-12
- Tuesday: 2-5
- Wednesday : 10-12 COFFEE MORNING
- Thursday: 2-5
- Friday: 9-12
- Saturday 10-1

Coffee Mornings are back on Wednesdays.

Free 24-hour
Mental Health
Helpline

Telephone
0808 800 3302

If you, or someone you care about, need urgent mental health support, call us 24 hours a day, seven days a week.
 We're here to listen and get you the support you need.




TURNING POINT

ST. HILDAS AFTERNOON TEA

We will be finally reopening in September if all goes well. Hopefully we will see you there for tea, coffee cake, chat. As well as the game tables. I can't wait to see you all again.

Any queries call me 2609088.
 Tricia and Jessie



WIGSTON BLINDS
 AND AWNINGS

 **Like us on Facebook**

VENETIANS | ROLLERS | VERTICALS | ROMANS | PLEATED
 AWNINGS | PERFECT FIT ROOF BLINDS

0116 260 4729

www.wigstonblinds.co.uk

BOOK YOUR PARTY
HERE TODAY!
AT EAST GOSCOTE VILLAGE HALL

FOR MORE INFORMATION PLEASE CONTACT:
 0116-2602202
 Clerk@eastgoscote.org.uk

2 Hour Children's Parties
 From Just £95 Including:

- 3 Hour hall hire (2 hour party, 30 mins set up, 30 mins pack up)
- Full after party cleaning service
- Fun Inflatables from Melton Inflatables

Standard Castles
 £95 Residents
 £105 Non-Residents

Bouncy Castles With Slides
 £110 Residents
 £120 Non-Residents

The ULTIMATE Castle Package
 £280 Residents
 £290 Non-Residents
 Including: Slide, Den, Soft Play & Ball Pool

Jungle Theme Soft Play & Inflatable Play Park
 £160 Residents
 £160 Non-Residents

Ball Pool, Rocker & Soft Play
 £115 Residents
 £125 Non-Residents

LOTS OF OTHER INFLATABLES AVAILABLE VISIT US ONLINE AT
WWW.MELTONINFLATABLES.CO.UK

G E GAMBLE & SONS

INDEPENDENT FAMILY FUNERAL DIRECTORS
— ESTABLISHED 1830 —

A NAME YOU CAN TRUST FOR
CARE, COMPASSION & CHOICE



57 HIGH STREET
SYSTON
LEICESTER
LE7 1GQ
TEL: 0116 2607500

A FAMILY OWNED FUNERAL DIRECTORS
OFFERING A PERSONAL AND PROFESSIONAL
SERVICE 24 HOURS A DAY
FUNERALS ARRANGED IN THE COMFORT OF
YOUR OWN HOME OR AT OUR UNIQUE
17TH CENTURY THATCHED COTTAGE

www.gamblefunerals.co.uk
EMAIL: enquiries@gamblefunerals.co.uk
MEMBERS OF SAIF AND NAFD

*LET OUR FAMILY LOOK AFTER YOUR FAMILY
FOR FREE ADVICE AND GUIDANCE*

Afternoon Tea	Tricia Marsland	0116 2609088
ATC Plt Officer	Andy Gaunt	0742 5171549
Beavers	Johanne Draycott	0798 1101644
Beedles Lake Golf Club		0116 2606759
Bizzy Bees	Rachel Laverty	07908781652
Borough Councillor	Laurie Needham	07807399879
Brownies	Rosemary Fraser	07981812955
Broomfield School		0116 2606704
Charnwood B. Council		01509 263151
Charnwood Recycling and Composting		01509 634563
Charnwood W. I.	Sharon Astill	07849888752
Cubs	Jayne Disney	0116 2608786
Daisy Chain	Natalie Palfreyman	0116 2607923
E G Parish Council	Liz Pizer	0116 2602202
East Goscote Stores and Off-Licence		01162606236
E.G United Football Club:		
Academy (Foundation Yr 3)		07486531608
Girls teams membership		07486531608
U11 boys (Sch. Year 5) Jon Day		07794973216
Environment Action	David Cannon	07873852372
Friends of Broomfield	Nicola Drage	07813132715
Friendship Club	Gill Morton	0116 3199678
Greener Goscote	David Cannon	07873852372
LCC Councillor	James Poland	07764966677
Guides	Rachel Laverty	07791731828
	Michelle Baker	07872066509
East Goscote Library		0116 3053510
LCC Mountsorrel Tip		0116 3050001

Messy Church	Rev Tim Day	0116 3486896
MP	Edward Argar	0116 2693789
Neighbourhood Watch		01162602202
Pocket Rocket Pre-School		07414253969
Pharmacy		0116 2606734
Plough		0116 2640444
Police: Emergencies dial 999, non emergency dial 101		
Rainbows	Alex Riley	07894055128
Scout Group/Hut		0116 2605457
Scouts	Dawn Manning	0784 312 2313
St Hilda's Bookings	Tricia Marsland	0116 2609088
St Hilda's	Vicar Rev Tim Day	0116 3486896
Syston Bowling Club		0116 2692105
Syston Catholic Ch.	Anthony Pateman	0116 2608476
Syston Methodist Ch.	Daniel Yovan	0116 2603296
Syston Model Railway	John Malpus	0116 2609789
Syston Volunteers	Mark	0116 2607888
Village Hall Bookings		0116 2602202
Weigh Hey		07823889088
Wreake Runners	Dave Palmer	07710 448253
Wreake Valley Lions	Mrs C Grimes	0116 2608412
Wreake Valley Rotary Club	John Squire	0116 2592788
Wreake Valley Youth Club	Carol Baxter	0116 2608858
Village Faults/Emergences		07739553380

If you're a member of a group which is providing a service to the community please contact us with up to date details.

East Goscote Village Hall, LE7 3ZL
Tel: 07414253969
Email: info@pocketrocketpreschool.co.uk
www.pocketrocketpreschool.co.uk

Available on
East Goscote P.C APP



EAST GOSCOTE PARISH COUNCIL

Meetings of the Parish Council are generally held at 6:30pm on the second Wednesday in each month. Any variation of date or time can be found on the notice boards, the apps or the website.

East Goscote Parish Council Offices are at the side of the Village Hall

Monday	09.30 to 12.30 hrs
Tuesday	09.30 to 15.00 hrs
Wednesday	Closed
Thursday	9.30 to 12.30 hrs
Friday	Closed

Contact Liz Pizer (Clerk) 0116 2602202
Website: www.eastgoscotepc.org.uk